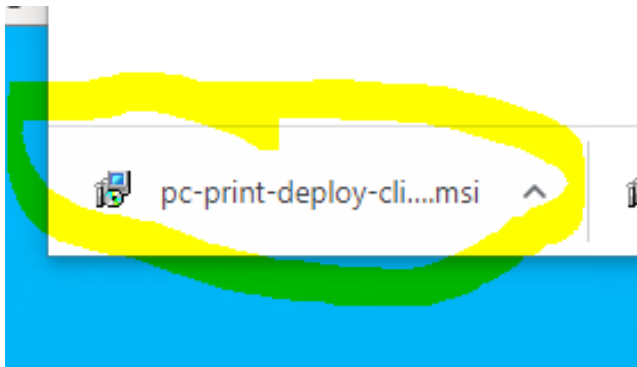


Papercut download instructions (Windows)

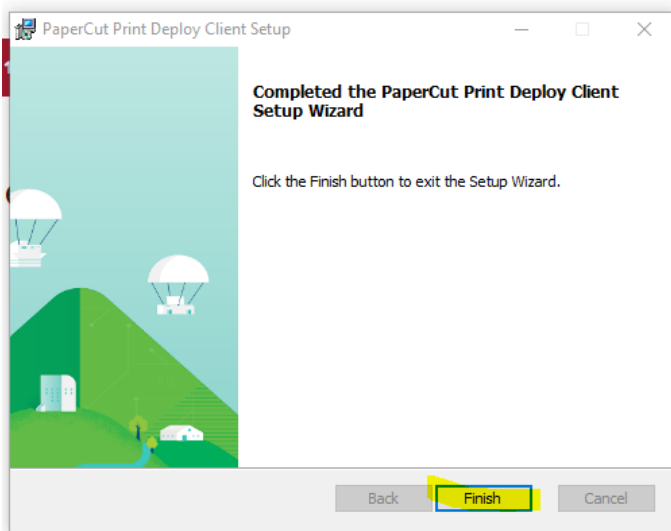
This processing must be done when you are in school environment.

Restart computer before installation

Step1: click this link <http://192.168.0.57:9191/print-deploy/client/windows> and it will automatically download the application. It should pop up on the left bottom of any website page.



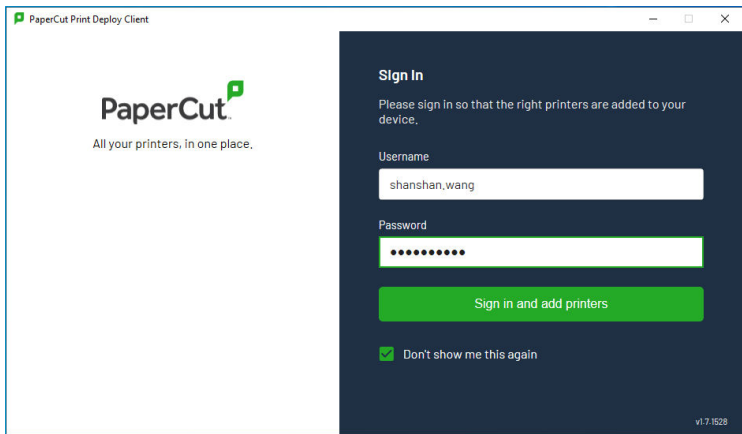
Step 2: click on the app which you just downloaded, just wait it to be installed. And then click **Finish**.



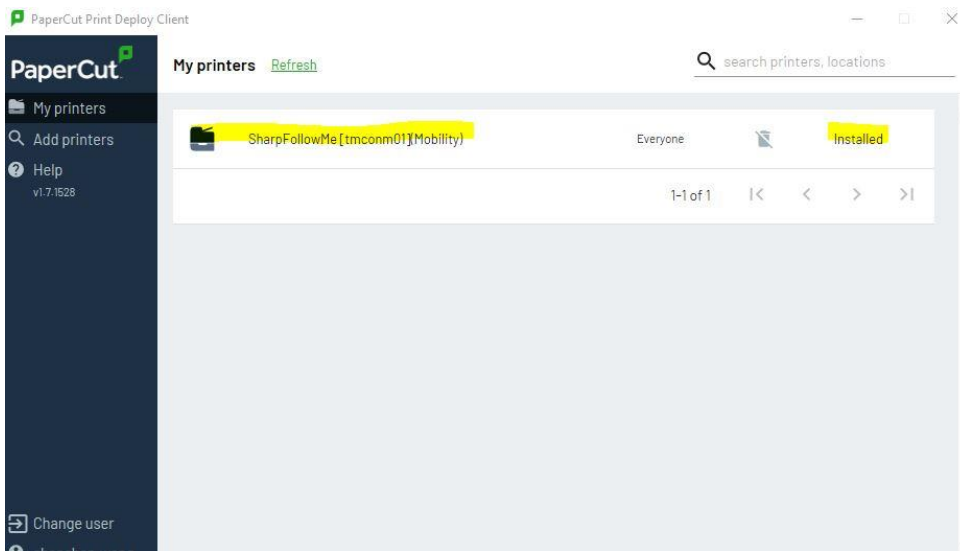
Step3: click the arrow on the right bottom of your desktop, and then click the printer-like logo, and view the printer.



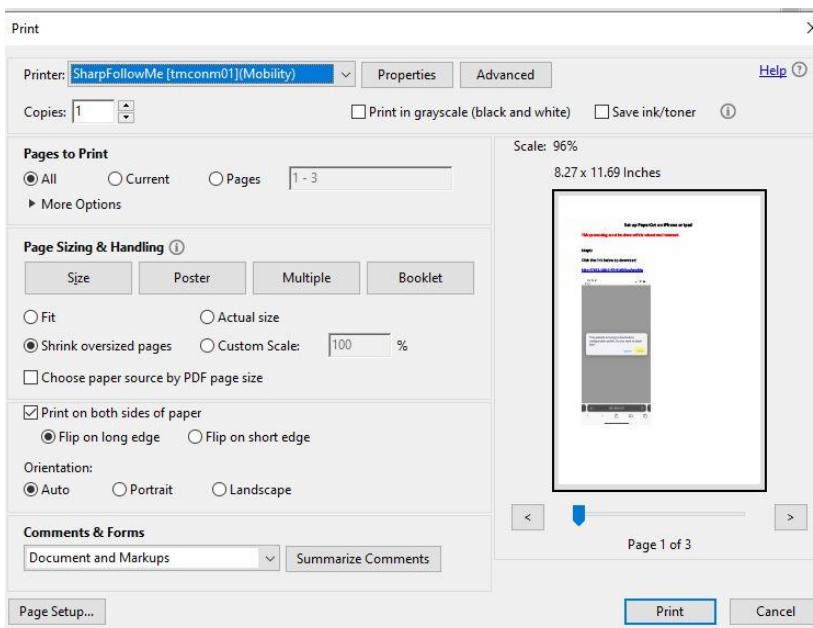
Step4: Login PaperCut system by using Internal Login & PW.



Step5: check if its installed? If not, just wait a few seconds.



Step6: when printing, use Printer "Sharp Follow-Me"



Step 7: discover more printer feature from Properties – Finishing/layout.

